

New House adjoining 16 Thurstons

Binsted, Alton, GU34 4PD

A brand new detached 3 bedroom village house with a large kitchen/dining room situated in the village of Binsted, built by a renowned local builder. There is underfloor heating to the ground floor, carpets to the bedrooms, en suite to bedroom 1, air heat source pump, fitted kitchen with breakfast bar, garden and driveway parking.

Price Guide £592,500

New House adjoining 16 Thurstons

Binsted, Alton, GU34 4PD



- Brand new detached house
- Under floor heating to ground floor, carpets to bedrooms and air heat source pump
- 3 bedrooms, en suite shower room to Bedroom 1
- Driveway parking with electric charging point
- Village location
- Sitting room
- Family bathroom with bath and separate shower
- Entrance hall with cloakroom
- Large kitchen/dining room with fitted appliances, breakfast bar and doors to the patio and rear garden
- Level front and rear garden with patio



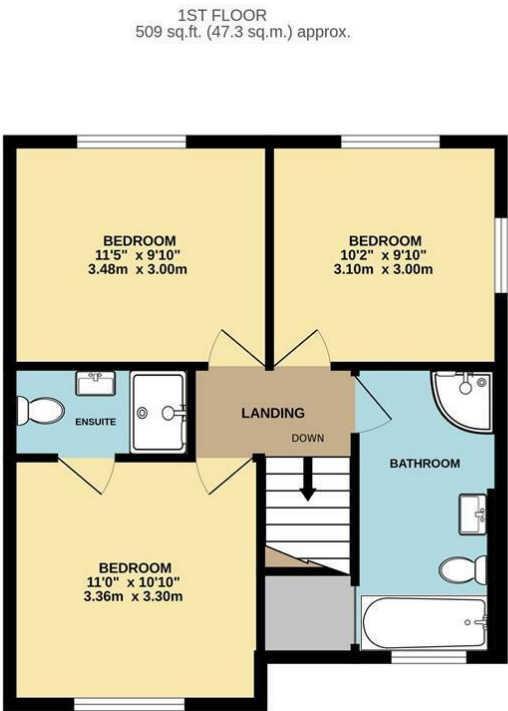
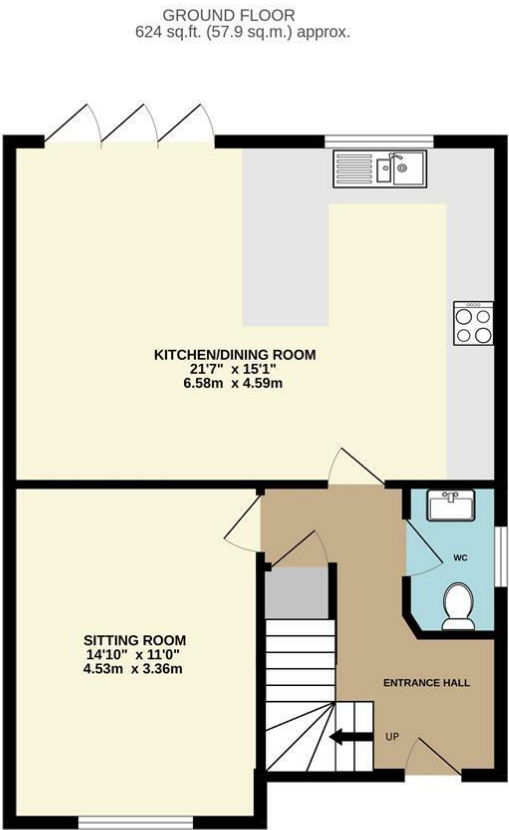
[Directions](#)

SAT NAV GU34 4PD





Floor Plan



TOTAL FLOOR AREA : 1133 sq.ft. (105.2 sq.m.) approx.

Whilst every attempt has been made to ensure the accuracy of the floorplan contained here, measurements of doors, windows, rooms and any other items are approximate and no responsibility is taken for any error, omission or mis-statement. This plan is for illustrative purposes only and should be used as such by any prospective purchaser. The services, systems and appliances shown have not been tested and no guarantee as to their operability or efficiency can be given.

Made with Metropix ©2025



These particulars, whilst believed to be accurate are set out as a general outline only for guidance and do not constitute any part of an offer or contract. Intending purchasers should not rely on them as statements of representation of fact, but must satisfy themselves by inspection or otherwise as to their accuracy. No person in this firms employment has the authority to make or give any representation or warranty in respect of the property.

